


D-60系列双组输出



CASE: P15-4 159×98×38mm

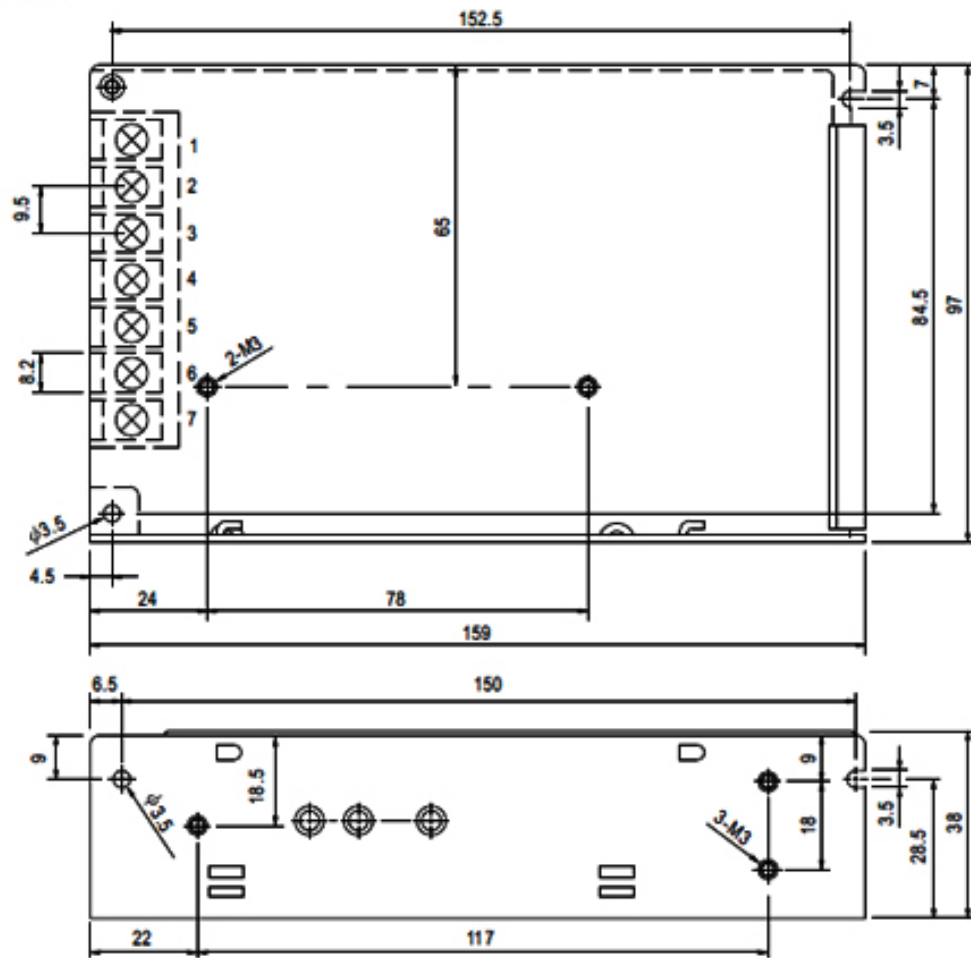
接线位置：7位 9.5mm端子
 L, N : AC输入 +V2: DC输出正端
 : 接大地
 COM : DC输出公用地端
 +V1 : DC输出正端

输入电压范围 AC input voltage range	85-264VAC 47-63Hz 120-370VDC
输入电流 Input current	2A/115V 1A/230V
冲击电流 AC inrush current	冷启动电流 18A/115V 36A/230V Cold-start current 18A/115V 36A/230V
漏电流 Leakage current	<0.5mA/240VAC
直流电压可调范围 DC adjustable range	额定输出电压的±10% ±10% rated output voltage
过载保护 Over load protection	105-135% 切断输出, 自动恢复 105-135% hiccup mode, auto-recovery
过电压保护 Over-voltage protection	115-135%
启动、上升、保持时间 Setup rise hold up time	300ms 50ms 80ms/230VAC
耐压性 Withstand voltage	I/P-O/P: 3KVAC 1minute I/P-FG: 1.5KVAC 1minute O/P-O/P: 0.5KVAC 1minute
工作温度、湿度 Working temperature	-10 ~ +60 .20%-90% RH
重量/包装 Weight/packing	0.55kg.45pcs/24.7kg

型号type	输出Output	差值Error	范围Range	效率Efficiency
D-60A	5V , 0.3-6A	±2%	75mV	73%
	12V , 0.2-4A	±6%	150mV	
D-60B	5V , 0.3-6A	±2%	75mV	76%
	24V , 0.2-2.2A	±5%	150mV	

NOTE:	<ol style="list-style-type: none"> All parameters NOT specially mentioned are measured at 230VAC input, rated load and 25 of ambient temperature. Ripple & noise are measured at 20MHz of bandwidth by using a 12" twisted pair-wire terminated with a 0.1uf & 47uf parallel capacitor. Tolerance : includes set up tolerance, line regulation and load regulation. The power supply is considered a component which will be installed into a final equipment. The final equipment must be re-confirmed that it still meets EMC directives. If the power supply is short-circuited under no load, it will recover automatically when short-circuit is removed.
-------	---------------------------------------------------------------------------------------------------------------------------------------------------------------------------------------------------------------------------------------------------------------------------------------------------------------------------------------------------------------------------------------------------------------------------------------------------------------------------------------------------------------------------------------------------------------------------------------------------------------------------------------------------------------------------------------------------------------------------

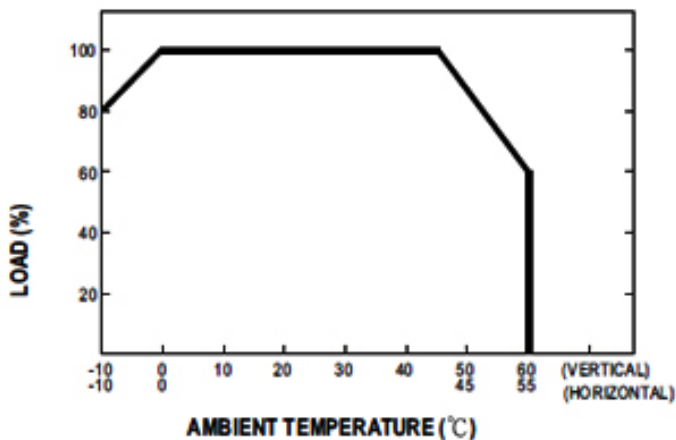
Mechanical Specification



Terminal Pin. No Assignment

Pin No.	Assignment	Pin No.	Assignment
1	AC/L	4	DC OUTPUT +V2
2	AC/N	5	DC OUTPUT +V1
3	FG \perp	6,7	DC OUTPUT COM

Derating Curve



Static Characteristics (24V)

