

S-320W系列单组输出

接线位置：9位 9.5mm端子

L, N : AC输入

⊕ : 接大地

-V : DC输出负端

+V : DC输出正端

CASE: P16-8 215×115×50mm

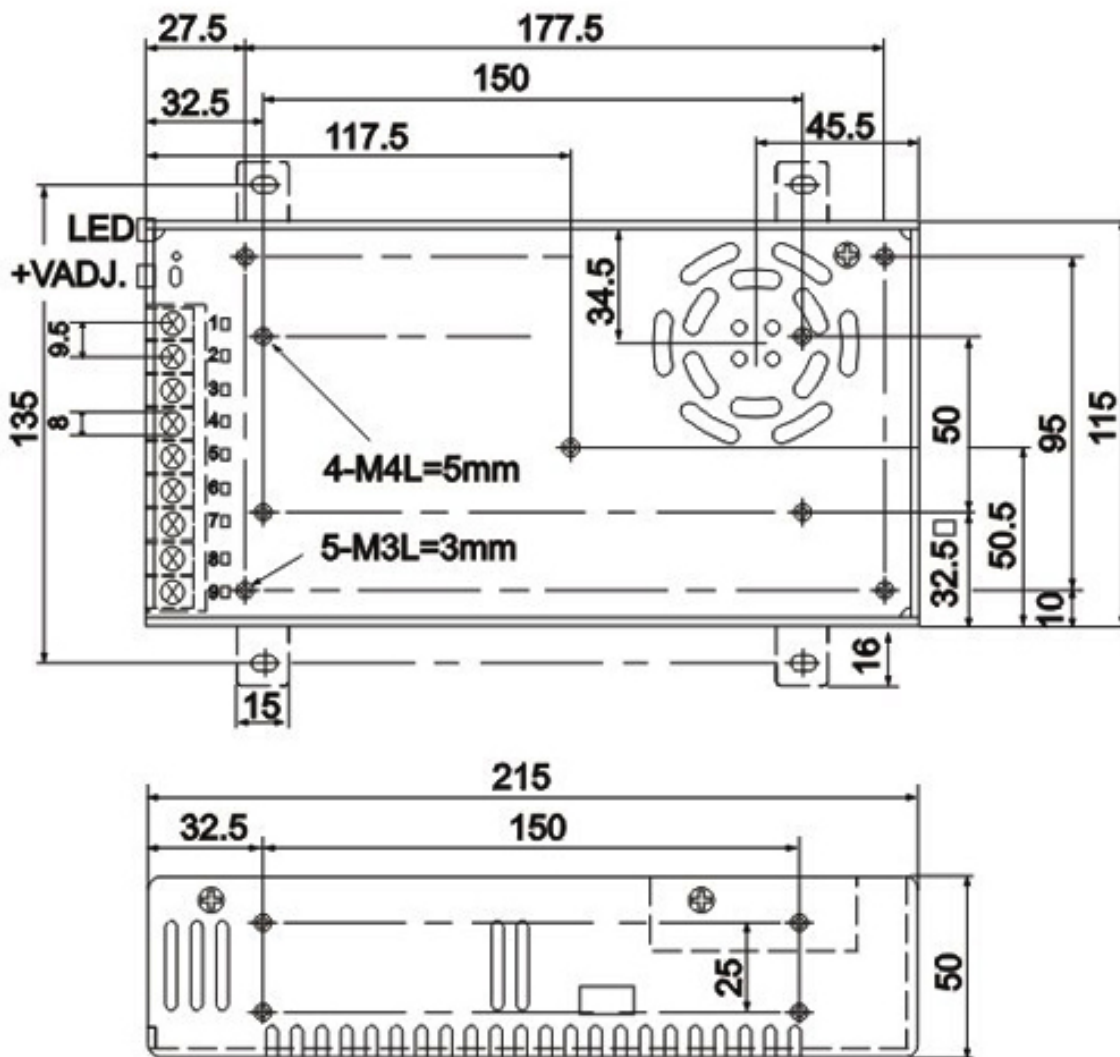
输入电压范围 AC input voltage range	85-132VAC/170-264VAC 47-63Hz 240-370VDC
输入电流 Input current	6A/115V 3.5A/230V
冲击电流 AC inrush current	冷启动电流 20A/115V 40A/230V Cold-start current 20A/115V 40A/230V
漏电流 Leakage current	<3.5mA/240VAC
直流电压可调范围 DC adjustable range	额定输出电压的±10% ±10% rated output voltage
过载保护 Over load protection	105-135% 切断输出, 自动恢复 105-135% hiccup mode, auto-recovery
过电压保护 Over-voltage protection	115-135%
启动、上升、保持时间 Setup rise hold up time	2000ms 20ms 20ms
耐压性 Withstand voltage	I/P-O/P: 1.5KVAC 1minute I/P-FG: 1.5KVAC 1minute O/P-O/P: 0.5KVAC 1minute
工作温度、湿度 Working temperature	-10 ~ +60 .20%-90% RH
重量/包装 Weight/packing	1.15kg.24pcs/27.6kg

型号type	输出Output	差值Error	范围Range	效率Efficiency
S-320-12	12V, 0-25A	±1%	150mV	82%
S-320-13.5	13.5V, 0-22A	±1%	150mV	83%
S-320-15	15V, 0-20A	±1%	150mV	84%
S-320-24	24V, 0-12.5A	±1%	150mV	86%
S-320-27	27V, 0-11A	±1%	200mV	86%
S-320-48	48V, 0-0.65A	±1%	240mV	87%

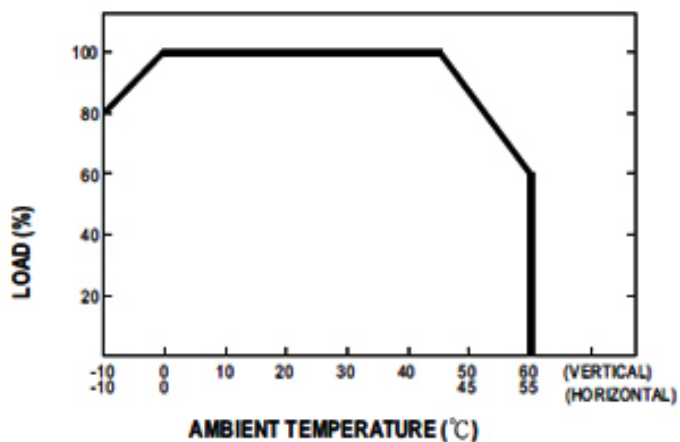
NOTE:

- All parameters NOT specially mentioned are measured at 230VAC input, rated load and 25 of ambient temperature.
- Ripple & noise are measured at 20MHz of bandwidth by using a 12" twisted pair-wire terminated with a 0.1uf & 47uf parallel capacitor.
- Tolerance : includes set up tolerance, line regulation and load regulation.
- The power supply is considered a component which will be installed into a final equipment. The final equipment must be re-confirmed that it still meets EMC directives.
- If the power supply is short-circuited under no load, it will recover automatically when short-circuit is removed.

■ Mechanical Specification



■ Derating Curve



■ Static Characteristics (24V)

