

S-350W系列单组输出

接线位置：9位 9.5mm端子

L, N : AC输入

⊕ : 接大地

-V : DC输出负端

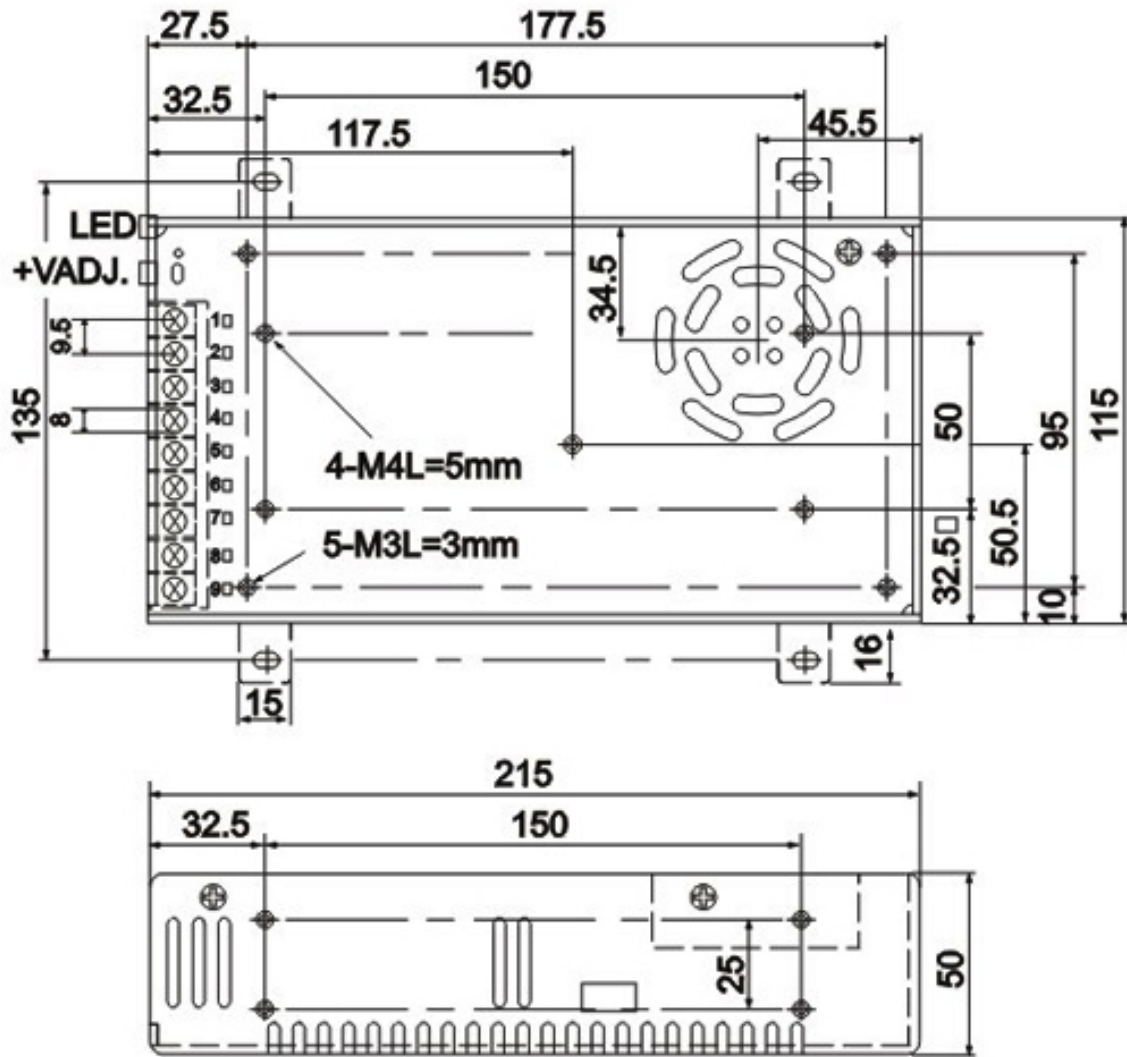
+V : DC输出正端

CASE:P16-8 215×115×50mm

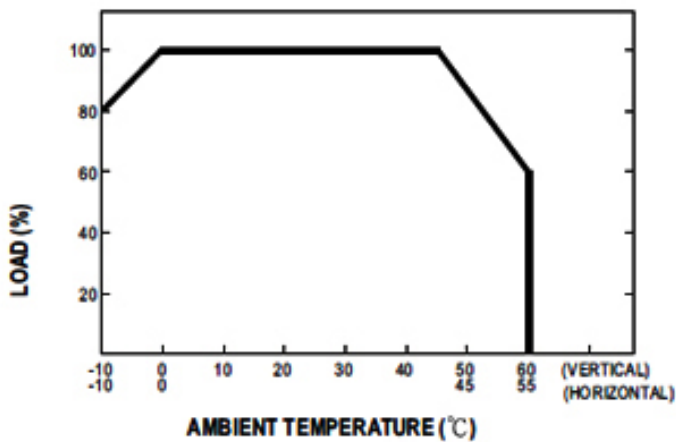
输入电压范围 AC input voltage range	85-132VAC/170-264VAC 47-63Hz 240-370VDC
输入电流 Input current	6.5A/115V 4A/230V
冲击电流 AC inrush current	冷启动电流 25A/115V 50A/230V Cold-start current 25A/115V 50A/230V
漏电流 Leakage current	<3.5mA/240VAC
直流电压可调范围 DC adjustable range	额定输出电压的±10% ±10% rated output voltage
过载保护 Over load protection	105-135% 切断输出, 自动恢复 105-135% hiccup mode, auto-recovery
过电压保护 Over-voltage protection	115-135%
启动、上升、保持时间 Setup rise hold up time	2000ms 50ms 20ms
耐压性 Withstand voltage	I/P-O/P: 1.5KVAC 1minute I/P-FG: 1.5KVAC 1minute O/P-O/P: 0.5KVAC 1minute
工作温度、湿度 Working temperature	-10 ~ +60 .20%-90% RH
重量/包装 Weight/packing	1.15kg.24pcs/27.6kg

型号type	输出Output	差值Error	范围Range	效率Efficiency
S-350-5	5V , 0-50A	±2%	150mV	73%
S-350-7.5	7.5V , 0-40A	±2%	150mV	76%
S-350-12	12V , 0-29A	±1%	150mV	74%
S-350-13.5	13.5V , 0-25.8A	±1%	150mV	79%
S-350-15	15V , 0-23.2A	±1%	150mV	78%
S-350-24	24V , 0-14.6A	±1%	150mV	81%
S-350-27	27V , 0-13A	±1%	200mV	82%
S-350-48	48V , 0-7.3A	±1%	240mV	83%

■ Mechanical Specification



■ Derating Curve



■ Static Characteristics (24V)

